



CD680

Contactless Unattended Reader

The CD680 has become the cashless payment industry's benchmarking product for contactless payment devices. The reader seamlessly integrates into a variety of environments, such as ATM, vending, electrical charge, laundry, parking meter, and many unattended payment kiosk system.

The CD680 is certified with contactless payment schemes, such as, Visa PayWave®, MasterCard®, PayPass™, American ExpressPay®, as well as many other mobile wallets.

The turn-key solution for open & closed loop **Cashless Services**

Maximum security

Incorporates stringent security standards to protect sensitive customer information by accepting any payment.

Seamless integration

Delivering complete cashless solutions requires seamless integration, allowing to embed into enclosures with secure payment acceptance technologies.

Boost profit margins

Reduce costs with our intelligent systems to manage yours streamline processes, automate decisions, and delight customers.



ParkingPay



VendingPay



evChargingPay



LaundryPay



CD680

Specifications

HARDWARE

Processor	ARM Processor
Input Voltage	+5VDC+/-10%
Operating Current	Operation mode: 430mA Idle Current: 60mA Quick Boot: 0mA Card reading: 260mA (without buzzer peak)

MECHANICAL

Weight	0.18 lb. (82 g)
Dimensions	H 2.95 in. (75 mm) x W 2.36 in. (60 mm) x D 0.72 in. (18 mm)
Material	PC, 94V-0

ENVIRONMENTAL

Operating Temperature	-22°F to +158°F (-30°C to +70°C)
Storage Temperature	-22°F to +176°F (-30°C to +80°C)
Operating Humidity	10% to 85%
Storage Humidity	10% to 90%

INTERFACES

Communication:	RS232, USB, TTL
----------------	-----------------

RATING

IP 65, IK 07

CONTACTLESS

Interface	- All layers of ISO14443 Type A&B - Support the ISO18092 NFCIP-1, ISO21481 NFCIP-2, ISO15693 - Support MiFare (Plus / Classic / Ultralight / DES Fire)
-----------	--

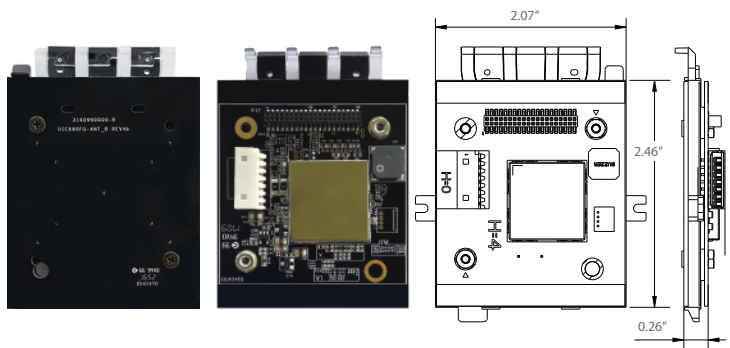
AGENCY APPROVAL

FCC Class B, CE Class B, CISPR22 Class B EMV Level 1 & Level 2 certificatin
--

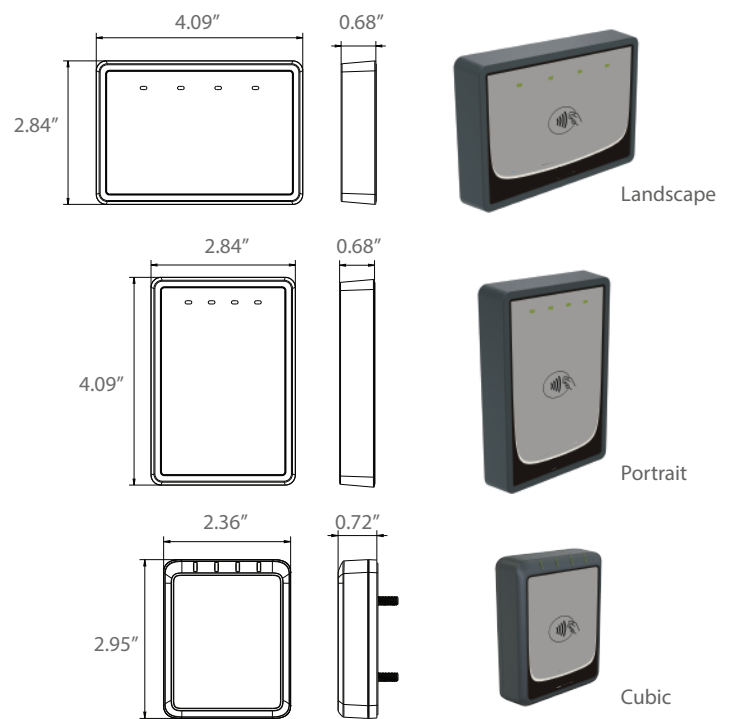
SECURITY COMPLIANCE

DES, 3DES, SHA, MAC, AES and RSA encryption algorithms Key Management: DUKPT

CD680 MODULE



OPTIONAL HOUSINGS



PMTsolutions AG
 Bottroper Strasse 8, 70376 Stuttgart, Germany
 Tel: +49 711 400 406 - 00 Fax: +49 711 400 406 - 01
 info@PMTsolutions.eu